

# SECOND THOUGHTS

*A monthly reflection on the ministries of Second Presbyterian Church of Louisville*



# Contents

Worship & Music ..... 3  
 Children ..... 6  
 Youth..... 8  
 Adult Formation ..... 9  
 Mission ..... 10  
 SPOT Groups ..... 12  
 Presbyterian Union..... 14  
 Presbyterian Women ..... 15

## SECOND Presbyterian CHURCH

*Sharing the grace of God with  
one another and the world  
around us.*

3701 Old Brownsboro Road  
Louisville, Kentucky 40207  
502.895.3483  
info@2ndpreslou.org

www.2ndpreslou.org  
Facebook: @secondpresbyterian  
YouTube: @2ndPresLou

“And the Word became flesh and lived among us...” (John 1:14)

Dear Friends,

Recently I was talking with a few people about the outdoor Christmas Eve worship service in 2020. Many of you will recall that it was the depths of the pandemic, and many of us were craving flesh-and-blood contact with others and the comforting rituals of the season. In response to those needs, we as a staff planned the outdoor service in addition to the online service from the sanctuary. On a blustery evening with the temperature in the 20s and a few stray snowflakes falling, some 160 worshippers gathered in the Chapel oval, bundled up, huddled in blankets to hear the Christmas story and sing the carols. It was one of the most powerful and unexpected moments I’ve experienced in ministry.

We’re in a season when life and church life have returned to something like normal, though there have been some permanent changes to both. Something that hasn’t changed is our need for each other – the physical presence of those we love – and our deep need to know that we are cared for and that our lives matter. Stripped down to basics, that’s the message of Christmas. The God of the universe loves us so much and desires to be close to us that God became one with us, sharing our life in the child of Bethlehem.

Eugene Peterson’s paraphrase of the Bible, *The Message*, renders John 1:14 as “The Word became flesh and blood and moved into the neighborhood.” It’s a folksy way to convey the profound truth that almighty God is not aloof or far away but has entered fully into our normal, everyday lives and is still present with us through the gift of the Holy Spirit. For most of us, most of the time, that presence is experienced through other people, often during worship and other rituals of faith that matter deeply to us. It seems to be especially the case during the Advent and Christmas season, with its deep emotions and memories.

I look forward to sharing worship with you in the coming weeks and remembering how precious it is to be together before the Lord in worship, study, service, and fellowship. What a joy it is to hear, again and again, the promise of Emmanuel, “God with us.”

Grace and peace,  
Steve

# Worship & Music



## Advent at Second Presbyterian

Join us as we explore the prophecies of the coming of Christ in Isaiah through proclamation, study, and art, and discover their hopeful word for our lives.

**Adult Devotional: Attending to Advent- Poetry, Prose, & Prayer**  
Available weekend of Nov. 27

**Each Sunday, 8:30 & 11 a.m. Services (Livestreamed at 11)**  
Special Carol Sing on December 18 @ 10:50 a.m.

**Sunday, November 27: Family Advent Service with Children's Choirs & Dinner/Workshop, 5 p.m. Reservations:**  
[tkissling@2ndpreslou.org](mailto:tkissling@2ndpreslou.org).

**"Let the Earth Rejoice," A Musical Celebration of Joy Sunday with Choirs, Octet, Handbells & Orchestra**  
December 11, 8:30 & 11 a.m.\* in Sanctuary (Livestreamed at 11)

**Incantare & Alchymy Viols in Concert - "Abendmusik"**  
Renaissance & Baroque Music  
in the Chapel, December 22, 12 p.m.



[2ndpreslou.org](http://2ndpreslou.org) \* YouTube 2ndPresLou



# Christmas at Second

## December 24 - Christmas Eve

Christmas Eve Family Candlelight Service, 5 p.m.  
*in Sanctuary (Live-streamed)*

*Music from The Octet & Samuel Libra, organ*

Lessons & Carols Candlelight & Communion Service

9 p.m. *in Sanctuary (Live-streamed)*

*Music from The Sanctuary Choir, Octet, String Ensemble,  
Louisa Woodson, harp & Samuel Libra, organ*

Christmas Eve Candlelight & Communion Service

11 p.m. *in Chapel*

*Music from Second's Musicians*



## December 25 - Christmas Day

One Service at 11 a.m. *in Sanctuary (Live-streamed)*

January 1 - 2nd Sunday of Christmas w/ Communion

One Service at 11 a.m. *in Sanctuary (Live-streamed)*

# The Creation

by Joseph Haydn

**THANK YOU TO ALL WHO ATTENDED & SUPPORTED THIS WONDERFUL EVENING!**

If you were not able to attend, you are welcome to view the concert on St. Francis' YouTube page: <https://youtu.be/KnPnMuxZ3DE>

Because of your generosity we were able to collect more than \$2,500 for the Kilgore Samaritan Counseling Center!



## Abendmusik: A Collaboration with Alchemy Viols December 22, 2022 12 PM EST

The Chapel of Second Presbyterian Church, Louisville, KY



Incantare joins forces with Alchemy Viols to present a luscious program of music for Advent. Music for voices, sackbuts, viols, continuo, and violins celebrate the holiday season, with music by rarely-heard composers and familiar favorites from the sixteenth and seventeenth centuries.



The Concert is Free. Come join us as we continue to celebrate Advent and Christmas. There will be a lovely selection of carols as well!

# A Few Words From Stewardship

As we approach the close of the calendar year, the Stewardship Committee would like to thank the congregation for helping to make 2022 a very successful year. Through your generosity, Second was able to provide meaningful financial support to more than a dozen mission partners at home and abroad, as well as much-needed relief to those challenged by unforeseeable natural disasters.

When making your 2022 pledges, please specify that your payment fulfills your 2022 pledge to ensure that it is appropriately credited and not confused with any payments you may be making for next year. If you have not done so, we remind you to fulfill your 2022 pledges and submit your 2023 annual giving pledges by the end of December. As regards to 2023 pledges, each of you should have recently received a pledge card in the mail; however, if you did not receive it or if you misplaced it and need a replacement card, call or drop by the church office, and we will be happy to provide you with another card. Alternatively, you can make your pledge by going to the "Giving" page on our church website and scanning and emailing your pledge to us.

Again, thanks one and all for your generous support of the church and its mission in 2022. Through your continued generosity, let's make 2023 even better!

With appreciation,  
Your Stewardship Team



Poinsettia baskets are being offered to honor/remember individuals. The cost is \$20. **The last day to order is Thursday, December 15.** You can fill out an order form electronically by scanning the Order Form QR code below, and you can make a payment by scanning the Payment QR code listed below (click on Poinsettia/Wreath on the Giving Page).

You can also write a check, leave the completed form at the reception desk, or mail it to Second Presbyterian Church, 3701 Old Brownsboro Road, Louisville 40207, Attn. Amy.

Please PRINT all information.

Name of Donor(s): \_\_\_\_\_

In honor of: \_\_\_\_\_

OR

In memory of: \_\_\_\_\_

Number of Poinsettias: \_\_\_\_\_

Contact Bonnie Boram with any questions. 502-893-3355.



Order Form



Payment

**\* 2PY CHRISTMAS PARTY \*  
SUNDAY DECEMBER 18  
6:00 - 8:00PM  
IN THE YOUTH SUITE**

Join us for an evening full of fun, food, and fellowship!

Please bring a dessert to share

Bring a wrapped gift, costing no more than \$10, for the white elephant gift exchange.



**VOLUNTEER AT PEACE PRESBYTERIAN CHURCH**

to assemble food boxes as part of their food pantry ministry



**Saturday, December 10  
10:30am - 11:30pm**

## 2PY Calendar

Tuesday 12/6 – Open Gym 7pm - 9pm

Friday 12/9 – Final deadline for ski trip /deposit

Saturday 12/10 – Volunteer at Peace Presbyterian at 10:30 am

Sunday 12/11 – Confirmation class at 9:45 am

Tuesday 12/13 – Open Gym 7pm - 9pm

Sunday 12/18 – Christmas Party 6pm - 8pm

Tuesday 12/20 - Open Gym 7pm - 9pm

	
<p>HIGH SCHOOL MONTREAT YOUTH CONFERENCE</p> <p>JUNE 11-17, 2023</p> <p>\$100 DEPOSIT DUE JANUARY 22</p>	<p>MIDDLE SCHOOL MONTREAT YOUTH CONFERENCE</p> <p>JULY 19-23, 2023</p> <p>\$100 DEPOSIT DUE FEBRUARY 5</p>

## 2PY Family Breakfast

There will be breakfast and a faith building activity in the Youth Suite every Sunday for youth and their families from 10:30 – 11:00. There are no formal Faith Formation classes for youth, but they are encouraged to sit together in the balcony during Worship. Watch the 2PY newsletter for Faith Formation opportunities.

**Kickball  
Razzle Dazzle  
BADMINTON  
Volleyball  
Devotional  
BATTLE BALL  
FLOOR HOCKEY  
ULTIMATE SOCCER**

*EVERYONE IS WELCOME!  
BRING YOUR "A" GAME!*

**Every Tuesday, 7-9pm!**  
\*\* no open gym 12/27\*\*

Now open to 7th & 8th Graders!

2PY WINTER RETREAT  
**SKI TRIP**

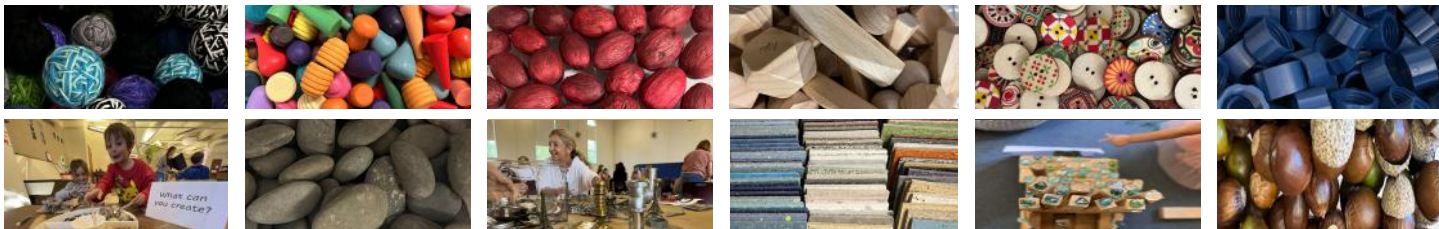


**\$100 Deposit Due Dec.9**

**JANUARY 13 - 16, 2023**



# Weekday School



Zooming In:

## Our Loose Parts Lab: What Open-Ended Materials Offer Children

Hayley Abell, Director

Like in life, balance is important in education. In one hand we hold intentional instruction, seeing it as necessary for honing certain skills and concepts. In everyday life, this looks like utilizing instruction manuals to correctly assemble Ikea furniture, directions to successfully travel to a vacation spot, and recipes for baking edible bread. In the classroom, children may be guided through creating a still-life painting, following a new game's rules, or learning to subitize dots on a die. Through guidance, we humans are able to develop particular abilities and knowledge while laying a foundation on which to build subsequent skills. However, all of these tasks come from outside of ourselves: a person or thing advising us in some way. So, what balances being directed or guided by others? What brings fullness to learning?

In the other hand we hold self-initiation, recognizing the direction that comes from inside of ourselves as equally essential to learning. When fueled by our own initiatives, we use our innovative, organizational, creative, problem-solving, and critical-thinking muscles. We also learn to trust our own ideas and capabilities. An example of this

comes from a day on the beach at Hilton Head Island two summers ago. A six-year-old girl was working in the sand near my family with incredible focus. She gathered reeds that had washed onto the shore and broke them into short and long lengths. She molded wet sand with different-sized pails. From there, she made pathways with the smaller reed pieces, leading to the sand domes. She then created a moat and outlined it with the taller reed segments. Finally, she gathered reeds together for a bridge to cross the moat. She carefully and thoughtfully designed a sand village with the materials available to her, reeds, sand, and



pails. The desire, idea, and execution all came from this child. What supported and gave form to her self-initiated creative energy were the materials available to her.

Open-ended materials, like sand and reeds, are also known as loose parts. This term was originally used in the 1970s by Simon Nicholson, a British architect. Loose parts can be found in nature, such as mud, acorns, pumpkin seeds, pine cones, sticks, beans, pebbles, shells or flowers. They can be recyclables, like bottle caps, paper towel rolls, boxes, or cans. Fabric, yarn, buttons, glass stones, metal and wood pieces, paper, tubes, tiles, and wire are all also open-ended, and the list goes on. Because they do not come with directions, loose parts are materials that children can use over and over in limitless ways. As simple and commonplace as these materials are, they are powerful tools that encourage children to follow their own ideas. This is why our classrooms are rich with open-ended materials and also why this past summer, a committee transformed our Teacher Resource Center into a Loose Parts Lab. The Lab is an inviting store room with a wide variety of open-ended materials teachers can borrow for their classrooms. It also includes an abundant supply of consumables like paper, cardboard, art materials, and sensory supplies just waiting for children to use for self- (or group!) initiated purposes.



We are dedicated to providing your children with an early childhood education that includes both hands: intentional instruction and self-initiation. We want their first introduction to school to carry a richer, deeper, and more comprehensive meaning and their definition of learning to include their own thought processes and creativity securely.



## WEDNESDAYS *Together*

will resume on Wednesday,  
January 11

(Jan. 11 - Mar. 29 with no class on Ash Wed.)

## *Parenting Seminar*

Kim Tabler is a Parent Educator and Coach trained in early childhood education. She will present a 4 week series about positive discipline on 1/18, 1/25, 2/1 & 2/8

### SAVE THE DATE *Summer Camps*

Smiley Camp Week 1 - June 12-16, 2023

Smiley Camp Week 2 - June 19-23, 2023

VBS - July 10 -14, 2023

Project Serve - July 10-14, 2023

Registration will open January 15, 2023

More information about the camps can be found at [2ndpreslou.org](http://2ndpreslou.org)



## Volunteers Needed

To teach and assist with weekly Faith Formation classes for preK - 5th grade. No long term commitment required and training will be provided.

Contact Lindsay Cook if you are interested in helping.  
[lindsayallisemartin@gmail.com](mailto:lindsayallisemartin@gmail.com)

## 2PK on Sunday

- 8:30am - childcare in room 117 for children 5 and younger
- 11:00am - childcare in room 117 for children 3 and younger
- Faith Formation classes for kids age 3 through 5th grade.
- Kids 3 - 3rd grade will be released to class from worship.
- Kids in 4th and 5th grades will meet for breakfast in the Youth Suite beginning at 10:30am and will go to class from there. **NOTE:** there is no class the 1st Sunday of the month (communion Sunday). Children are asked to sit with their families in Worship.



## December 17 5 - 8:30 p.m. *Parent's* **Night Out** \$15 per child \$25 Family Cap

Need a break??

Pack a dinner and have the kiddos join us for a fun filled night of crafts, gym time, story telling and more!

Birth - 5th grade. Spaces are limited, reservations are a must.

Contact Amy Heckmann—[aheckmann@2ndpreslou.org](mailto:aheckmann@2ndpreslou.org)—by Monday, Dec. 12 with questions and to reserve your spot!



---

# Adult Formation

Zoom links to adult education programs can be found in *Seconds to Go*.

You may also contact the church office: [tkissling@2ndpreslou.org](mailto:tkissling@2ndpreslou.org) or 502-895-3483.

---

## Morning Joy

Classes will resume 1/12/2023!

Classes begin at 9:30 a.m. with coffee and fellowship, After class, by 11 a.m., a small discussion group convenes for those who wish to participate. We will provide a syllabus to anyone who would like a copy. All are welcome! Participants can attend in person (in the Fellowship Hall), or they can attend virtually via Zoom. A Zoom link is sent out every Thursday morning.

---

## Biblical Studies

Led by Dr. Acton Ostling, Jr., the class meets in-person on Sunday mornings at 9:30 a.m. in Room 252. If interested in receiving the announcements or emails, whether or not you are a regular member, please email Dr. Ostling at [lingjr@twc.com](mailto:lingjr@twc.com).

---

## Pathways

Led by Elizabeth Clay, the Pathways class meets on Sunday mornings at 9:45 a.m. in the Fellowship Hall A and via Zoom. Pathways is a group of folks who enjoy thinking and talking about life, faith, the Bible, and the intersection of the three. The Zoom link is in *Seconds to Go* which is sent out every Friday. Please come join us!

---

## Reading the Bible

Led by Dr. Marty Soards, Retired Professor of New Testament Studies at Louisville Seminary, the class meets on Sunday mornings at 9:45 a.m. in the Parlor and via Zoom. We are now studying the book of Acts, and we would be glad to have anyone join us who is interested in such Bible study.

---

## 2nd Sunday on the Third

The class meets on the third Sunday of each month at 9:45 a.m. in room 251 and is for parents of children from birth through teenage years. Class members delve into topics facing young parents trying to raise faithful children in this tumultuous and ever-changing world. They share experiences and ideas to help each other find ways to make God the center of our families. Moderators Lee and Vic Baltzell lead the class, and childcare is available. For more information, please contact Lee Baltzell at [leebaltzell@gmail.com](mailto:leebaltzell@gmail.com).

---

## Sisters in Spirit

A warm, welcoming, and supportive group of ladies that enjoy a special time of fellowship and book discussion around topics that help us grow in our everyday faith. We generally meet on the second Tuesday of the month 7–9 p.m. in the home of a church member. Open to adult women of all ages and stages of life. Join us when you are able (it's ok if you have to miss a month or two, you are always welcome to come as you are able). Contact Selina Costley ([sjc@iglou.com](mailto:sjc@iglou.com)) for more information or to be added to the email list.

Sisters in Spirit will gather Tuesday, December 13, at 7 p.m. at Nancy Ostertag's to conclude our book Why? Trusting God When You Don't Understand by Anne Graham Lotz.

Please respond to Selina Costley at [sjc@iglou.com](mailto:sjc@iglou.com) if you're able to attend.

---

## Men's Bible Study

Men's Bible Study meets in Room 251 and via Zoom at 7 a.m. on Friday mornings. Dr. Marty Soards, Retired Professor of New Testament Studies at Louisville Seminary leads the session.

---

## December Mission of the Month

Make a special gift to our missionaries who are faithfully serving our neighbors throughout the world.

**Sherri & Dustin Ellington**  
Lebanon

**Dan & Elizabeth Turk**  
Madagascar

**Karla Koll**  
Costa Rica

Donations can be made to Second Presbyterian Church  
Designate Missionary Christmas fund on donation

Thank you for your support,  
Mission Committee



## SHIVELY AREA MINISTRIES CHILDREN'S BOOK DRIVE



Do you have children's books you no longer need?  
Shively Area Ministries is collecting gently used books for  
infants through elementary school.



Books can be dropped off in the  
Mission Closet or at the Church Office



# EL SALVADOR TRIP

## MARCH 11-18 2023

**CONTACT PR. JORDAN AT [JAKIN@2NDPRESLOU.ORG](mailto:jakin@2ndpreslou.org)  
FOR MORE INFORMATION.**

## Thank You!

Thank you to everyone who donated to Cabbage Patch Christmas for our December Mission of the Month. Your ongoing support of our mission partners is greatly appreciated.

## Side by Side with Sisters and Brothers at Peace Presbyterian

Peace Presbyterian is an African-American church in our Presbytery with which Second has a special, enduring partnership. Once a month volunteers from Second join Peace's church members in distributing Dare-to-Care goods, vegetables, and meat to people in Peace's Newburg community. Distribution dates are the 2nd Monday of each month, from 8:30-noon. We fill boxes the Saturday before that at 10:30 am.

This is a significant opportunity to assist our brothers and sisters at Peace -- and to help meet the basic needs of many citizens in financial distress. Every month we meet 150-200 people who drive to the church and receive boxes filled with food. Second has about 25 members involved over the course of a year, and youth often join on Saturdays to help. We welcome and need more volunteers!

Would you like to participate in this partnership? To learn more or to sign up, please email Jodie Goldberg at 303jodie@gmail.com, or call/text her at 502/333-0053. Your consideration of this ministry is greatly appreciated.

On Sunday evening, December 18, Peace Presbyterian will host "Christmas at the Gates," an event to welcome scores of people who receive food from Second and Peace every month. Located at 4210 East Indian Trail, Louisville 40213, Peace is an African American church in our Presbytery with whom we are blessed to join in helping families in critical need of food.

The occasion on December 18 will feature a Peace-created Christmas play, "Christmas at the Gates," and Santa has heard about it! The party-goers will receive gifts of food! Which is where Second comes in.

**Would you consider giving a box or basket of non-perishable food items? Cans or packages of veggies, fruits, meats, soups, peanut butter, cereals, etc. — whatever you wish, as long as it is all non-perishable. Perhaps think of 6-8 people for each item, and make the box or basket a size that a person can easily carry.**

**Then place your boxed gifts in the Mission Closet. You may bring your boxes/baskets anytime before 12:30 p.m. on December 18. That's when your gifts will be taken to Peace, just before the party. Cathy Martin and Jodie Goldberg are coordinating the transport.**

There can't be too many boxes. What is not needed for the party will be distributed at our monthly work days at Peace.

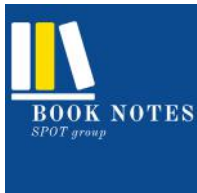
To share in the ongoing work with our brothers and sisters at Peace, please contact Jodie Goldberg at 502-333-0053 (cell) or 303jodie@gmail.com.





Second Presbyterian Options Together

**A small group ministry of Second Presbyterian Church**  
 SPOT serves to unite people who share a common interest and deepen their faith in Christ through building relationships and reaching out to others.



**Book Notes**

Each month since 2011, a member of our group selects a book, researches the author, reviews the book, and then the group discusses it at our monthly meeting. We meet on the first Tuesday of the Month at 10:00 am in the church parlor. We faithfully support UCHM food pantry.

Contact Susanne Wright: (502)930-7465, sjwright@iglou.com



**Paint Spot**

Open to all adults, our Paint SPOT is for beginners to skilled painters in acrylic. We gather on Thursdays at 1:00 pm in the Youth Suite to work on individual projects and fellowship together.

Contact Linda Wood: (502) 893-3330, el.wood@twc.com



**Busy Needles**

We meet twice a month in the Parlor: second Sunday after church, and the fourth Thursday at 11:00 am (see church calendar). Our consistent projects are Prayer Shawls and Throws for our members, their family and friends. But, we also work on other projects for various groups and organizations both locally and worldwide. All ages and skill levels are welcome!

Contact Bev Wahl: (502) 423-9271, bevwahl41@gmail.



**Pilates**

Our Pilates classes are held on Monday and Thursday night in the Narthex at 5:30 pm. Pilates benefits include building a strong core, flexibility, balance, focus, coordination, and concentration. Everyone is invited to join our class. Participants bring a mat and other tools will be supplied, the cost is \$10.

Contact Susan Schmidt: (502) 523-5934, puremovementlv@gmail.com



**Dinner Groups**

A time to share over a good meal, we have multiple groups, some meet in homes, some at restaurants. Our groups meet throughout the year. Seeking those interested in joining a group or starting one!

Contact Cheryl Cooper: (502) 417-3999, cheryltcooper@gmail.com



**Prayer Group**

Everyone is invited to pray through our weekly prayer list on Wednesdays at 10:00 am in Room 251. All are welcome to pray, young and old, new Christians or lifetime believers.

Contact Alice Virginia Dodd: (502) 895-4605



**Garden Spot**

A new group for those interested in gardening. We will visit local gardens of distinction; invite local garden "gurus" to speak; and share ideas and experiences.

Contact Joan Gaston (502) 896- 8322

*Additional SPOT groups on next page*



Second Presbyterian Options Together

**A small group ministry of Second Presbyterian Church**  
SPOT serves to unite people who share a common interest and deepen their faith in Christ through building relationships and reaching out to others.



### 2nd Act

We believe that music is a gift from God which transcends barriers of race, gender, and language. 2nd Act has brought voices together for over 25 years, and with joy, we take our gift to those in need of song to encourage, uplift and spur spiritual growth. We meet every Wednesday at 10:00 am and perform at various residential facilities in the area. We meet in the Choir Room on Wednesdays at 10:00 am, when we are not performing.

Contact Susan Langford: (502) 897-3789,  
toursplus@aol.com



### Spot Walkers

The SPOT Walkers meet the first and third Wednesday of each month at 9:00 am. Our walks are no more than two miles. When the weather is nice we walk at various outdoor spots; when the weather is not so nice we walk inside the Oxmoor Mall. Everyone is invited! We share lots of conversation as we walk, and we continue our conversation over coffee after our walk.

Contact Valerie Dreher: (502) 552-8918  
or (502) 618-3732

If you are interested in starting a SPOT group or if you would like more information on SPOT groups please contact Sunny Seale: (571) 438-8393.

## Presbyterian Women

The Presbyterian Women of Second will meet at 10:00 a.m. on Tuesday, December 13th, for Bible study and fellowship, followed by a Pot-Luck holiday luncheon at 11:30 a.m. All women at Second are invited to join us. A Zoom option will be available.

The 22-23 Horizons Bible study is “Celebrating the Sabbath” by Carol M. Bechtel. Each lesson focuses on passages of scripture. We will be encouraged to practice Sabbath in “real and practical ways,” making the Sabbath an important part of our lives in Christ. The title of Lesson 4 is “Sabbath and Surrender.” The scripture is Exodus 15, the “manna” story. Study books are available for \$10.

presbyterianwomen.org website has opportunities to subscribe to the Horizons Magazine and find information about Presbyterian Women in God’s world.

As we pray for peace and comfort in our world, may the love of Christ and the joy of our friendships be with you, now, as always, In Christ,

Amy Parker, Moderator Amyparker158@hotmail.com (502) 897-5076 home or (502)641-9204 call or text.

# Presbyterian Union

On the first Tuesday of each month (usually), people gather downtown for the fellowship of a lunch, followed by a speaker and discussion around a wide variety of topics-- church and culture issues, faith questions, the changing face of Louisville, topics of personal interest. Think of it as a quick retreat with some friends from different places to think about the world of work and living from a different direction. All are welcome, so please invite guests.

**TOPIC:** “The Bible in a World of Religious Diversity”

**SPEAKER:** Dr. Tyler Mayfield, A.B. Rhodes Professor of Old Testament and Faculty Director of the Louisville Grawemeyer Award in Religion



Tyler Mayfield is a biblical scholar, teacher, and administrator. He previously taught at Union Theological Seminary in New York City, Claremont School of Theology in southern California, and the University of California, Riverside.

At Louisville Seminary, he teaches courses in biblical theology, ethical readings of Scripture, and prophetic literature. He leads a triennial travel seminar to Israel and Palestine to explore the ancient biblical sites as well as contemporary Judaism, Islam, and Christianity. As the Director of the Grawemeyer Award in Religion, he coordinates a three-committee, year-long selection process to award a \$100,000 prize for the best new idea in religion.

Tyler is the author of four books. He is a member of St. Andrew United Church of Christ and Highland Baptist Church, where his wife is on the pastoral staff. He also enjoys regularly preaching and lecturing at churches.

Samford University, (Alabama), BA; Yale Divinity School, MAR; Claremont Graduate University, Ph.D.

**Where:** Vincenzo’s, The Courtyard Room 105 South 5th Street

Lunch: buffet salad and entrée, dessert, iced tea

Cost: \$20.00 including gratuity

**When:** TUESDAY, December 6, 2022, at 11:30 am

**RSVP:** If you will attend, please notify by 4:00 pm Monday, December 5 (if accepting) E-mail Ann or Ivan Schell at [adschell@bellsouth.net](mailto:adschell@bellsouth.net) or phone 894-8440

**Mark your calendars for future meetings (always first Tuesday):**

**Parking:** Parking is on 5th Street either on the street or across Market (one way east) at the Stock Yards parking sign on the south side of Market between 5th and 6th or at the National City Bank Building (entrances on 5th, near Main, and Main Street [one way west] on left immediately before 5th).

**Payment:** Please pay at door by cash or check.

**Cancellation:** If you make a reservation and do not cancel before 9:00 am on the day of the presentation, we must ask that you pay.

## Meet our New Staff

Hi, I'm Jim Rogers from Lawrenceburg, Kentucky, where I still live with my two young sons, Owen and Noah. It is a pleasure to be here working with all of you. I worked for 30 years for Marriott International as a Maintenance Manager. I retired in July 2019 from Marriott; upon the birth of Noah, I worked at the Kentucky center for the performing arts as a Maintenance Manager. After that, I worked for Hobart corporation as a service technician and sales, and now I'm working with some wonderful people who I can't wait to make into lifelong friends



## Ushers Needed

Ushers are needed for the 11 a.m. service in the Sanctuary on Sunday, December 25 and also for the 11 a.m. service in the Sanctuary on Sunday, January 1. If you would like to usher please contact Connie Smith at [conniesmith@bellsouth.net](mailto:conniesmith@bellsouth.net). We appreciate your help!





## *Care for the Caregiver*

Are you helping a loved one with impairments related to aging, disability, or a mental disorder? Are you taking care of someone who has a chronic illness, managing medications, or taking care of household chores, meals, and healthcare for someone who cannot perform these tasks alone? If you answered yes to any of these, then you are a caregiver.

Caregivers hold it all together or have the overwhelming feeling that they must hold it together because no one else can. Caring for your loved one can lead to isolation, depression, chronic health issues, and poor quality of life. The Deacons here at Second see how important it is to support its members who hold the role of caregiver.

The caregiver support group meets on the second Monday of each month at 4:00 p.m. These remote monthly Zoom meetings provide resources, education, guest speakers, and a safe space for support and assistance in finding solutions to the challenges of caregiving. If you are interested in joining or learning more, please contact the office or reach out to Elizabeth Clay, [eclay@2ndpreslou.org](mailto:eclay@2ndpreslou.org), or Deacon Cathy Hollander.

## passages

*We remember in prayer...*

Rebecca, Maggie, and Johnny Brown on the death of husband and father John Y. Brown Jr., 11/28/2022

Stuart Allen and his family on the death of his mother Carolyn Allen, 11/22/2022

Louise & Wallace Horine and their family on the death of their daughter, Margaret Lynn Adair, 11/14/2022.

David, Leslie, Nancy, Susan, and the Morrow family on the death of mother Barbara, 10/31/22.

Stephanie Altobellis, Allysa, and Sergey Dunbar, Martha Hall, Sarah Parker, and the Dunbar family on the death of husband, father, and brother, Tom Dunbar, 10/30/22.

Carol McCarty on the death of her sister, June, 10/1/2022

Todd & Lindsey Anderson and their family on the death of his father, Dr. Todd Anderson, Sr., 9/13/2022

Heather Sexton, Cara Panther, and their families on the death of their father, Doug "Skip" Young, 9/5/2022

Roberta Fischer and her family on the death of her husband Carl Theodore Fischer, Jr., 9/3/2022

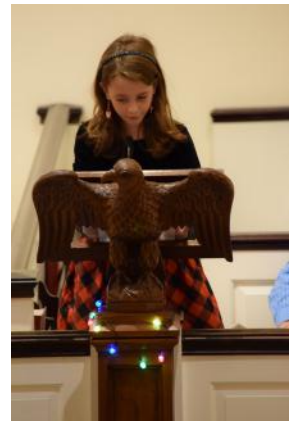
## *Hope & Healing While Grieving*

Our culture puts a lot of emphasis on happiness but loss is a very real part of everyone's life. Hope and Healing While Grieving is a safe place for anyone who is grieving the loss of a loved one. We will meet at 11:30 am in the Parlor on December 7 and December 21. All meetings will be at church with a zoom option. Please contact Elizabeth Clay, [eclay@2ndpreslou.org](mailto:eclay@2ndpreslou.org) if you have questions or are interested in joining the group.

# Advent



# Advent





# SECOND Presbyterian CHURCH

Periodicals  
Postage Paid at  
Louisville, KY

Second Thoughts (UPS 488-060). Published Monthly.

Postmaster, send address changes to:

Second Thoughts, c/o Second Presbyterian Church

3701 Old Brownsboro Rd

Louisville, KY 40207

## Staff

**Rev. Steven P. Jester** *Pastor & Head of Staff*  
sjester@2ndpreslou.org

**Rev. Jordan Akin** *Associate Pastor for Formation & Mission*  
jakin@2ndpreslou.org

**Rev. Rich Gianzero** *Interim Associate Pastor*  
rgianzero@2ndpreslou.org

**Hayley Abell** *Director of Second Presbyterian Weekday School*  
habell@2ndpreslou.org

**Jim Rittenhouse** *Director of Worship & Music Ministries*  
jrittenhouse@2ndpreslou.org

**Ricky Case** *Coordinator of Student Music*  
rlcase01@gmail.com

**Elizabeth Clay** *Parish Associate*  
eclay@2ndpreslou.org

**Michelle Hormann** *Ministry Coordinator for Care & Stewardship*  
mhormann@2ndpreslou.org

**Amy Heckmann** *Childcare Coordinator*  
aheckmann@2ndpreslou.org

**Diane Jackson** *Bookkeeper*  
djackson@2ndpreslou.org

**Van Jones** *Custodial Lead*  
vjones@2ndpreslou.org

**Amy Kiefner** *Church Administrator*  
akiefner@2ndpreslou.org

**Tammy Kissling** *Ministry Coordinator for Formation & Mission*  
tkissling@2ndpreslou.org

**Samuel Libra** *Organist & Worship Assistant*  
slibra@2ndpreslou.org

**Elliott Nichols** *Technology Coordinator*  
enichols@2ndpreslou.org

**Christina Recktenwald** *Children's Choirs Coordinator*  
callasbouras@twc.com

**Paula Roberts** *Organist Emerita*