

# SECOND THOUGHTS

## Christmas Eve Services

Tuesday, December 24  
5 p.m.  
9 p.m.  
11 p.m.

Second Presbyterian Church  
[www.2ndpreslou.org](http://www.2ndpreslou.org)

## Contents

Upcoming Events .....	3
Music.....	4
Children.....	7
Youth.....	8
Formation.....	9
Mission .....	10
Weekday School .....	12
Fellowship .....	13
FYI .....	15

*"So the Word became flesh; he made his home among us..."*  
(John 1:14)



Dear Friends,

I was walking through my neighborhood on a sunny, crisp Saturday afternoon. I was thinking about a couple of writing assignments related to Christmas. The simple, yet transformative testimony of John, referenced above, came to mind as I walked and considered the essence of the Christmas story. So did the well-known words from the third chapter of John, "For God so loved the world that he gave his only Son..." A God who is present in our everyday lives with love and grace, a God who loves this world and is a giver - it doesn't get any better than that!

I was walking in the street, against the flow of traffic, close to the edge of the road as is always the case. Many people do the same in our area, either walking or jogging. A car was coming toward me with plenty of room to get by. There wasn't a car parked on the other side of the street nor one coming from the other direction. But, suddenly, the car swerved toward me, clearly headed toward the edge of the street, and me! I jumped onto the sidewalk, held out my arms with palms up in the universal, "What are you doing?" gesture. The driver was a young woman who never looked at me, but stared straight ahead. As she sped past, I described her in unflattering terms in my head!

After the heart rate slowed and the adrenalin eased off, I had an unexpected Christmas thought. The life-giving, re-creating speech of God made - and makes - its home among us, all of us. God so loved - and loves - the world, all of it. God so loves people who do stupid things. God so loves the bitter and the angry. God so loves the unpleasant and the mean spirited. God so loves people I don't appreciate and understand. God so loves people with whom I disagree and whom I struggle to respect. God so loves the failures. God so loves the people who make the same mistakes over and over. God so loves that young woman behind the wheel who did what she did for unknown reasons - smart phone issues, perhaps? God so loves you. God so loves me.

God present, making a home, with all of us needy, confused, struggling sinners. God loving and giving not just to people like us, those of whom we approve, but to this big, wide, amazing world filled with darkness and light, grief and joy, pain and celebration, ugliness and exquisite beauty. That's the world into which God came in the infant Jesus and the kind of people to whom God came. That's the world God comes to still, and the kinds of people God comes to still.

That's the Christmas story. Isn't it wonderful beyond imagining? A blessed Advent and Christmas to you all!

Grace and peace,

Steve



# Savior of the Nations, Come

## *Advent & Christmas at Second*

---

**Sundays, December 1, 8 and 22**

8:30 a.m. and 10:50 a.m.

Advent Worship

**Sunday, December 1**

Family Advent Workshop & Service

5 p.m. - Dinner and Crafts

6:30 p.m. - Worship led by Children, Youth, and Choirs

**Sunday, December 15**

8:30 a.m. & 10:50 a.m. "We Rejoice in Your Salvation"

Musical Celebration of Joy Sunday

with Sanctuary, Youth, Children's Choirs -

Orchestra - Austin Bells - Organ

**CHRISTMAS EVE**

**Tuesday, December 24**

5 p.m. - Family Candlelight Service

9 p.m. - Lessons & Carols with Communion

11 p.m. - Candlelight Service with Communion

[www.2ndpreslou.org](http://www.2ndpreslou.org)

# music



## THANK YOU, 2019/20 PATRONS!

*We are grateful for the support of our many patrons- some who have given in memory and honor of those who have loved the music programs of Second Presbyterian or who have given specifically for the 2019-20 Concert Series. These gifts ensure our Series continues to offer inspiring music that glorifies God, and that we can continue to take our day-of-concert offerings to our ministry partners.*

### Patrons

Emory Apple	Holly and Joe Gathright	Vicki and June Prince
John and Cheeky Bahe	Betty and George Gibbs	Margaret Gregor Radford
Sandy Bailey	Jodie Goldberg	Jim and Janet Rittenhouse
Maude and Walt Baker	Jean Groskreutz	Jeff and Paula Roberts
Bobbie Baxter	Tom and Judy Hettmansperger	Ivan and Ann Schell
Jim and Mary Beard	Woody and Missy Hitt	Louise B. Seiler
Larry and Bonnie Boram	W.W. and Constance Hobson	Carole and Daniel Shomer
Ann Buckman	Louise and Wallace Horine	Larry Sloan
Richard and Elizabeth Clay	Bob and Rae Horton	Connie and Gene Smith
Edith Courtenay	Portia H. Leatherman	Chip and Susan Snyder
Jeanne and Stan Curtis	Ed and Carolyn Lewis	Martha Spencer
Katherine M. Davis	Bob and Eleanor Maddox	Walter and Jamie Swyers
Alice Virginia Dodd	Linda and "Scotty" McArthur	Tom and Sandall Tyrrell
David and Lea Ann Dorsey	Bill and Susan McDowell	Bob and Ann Colbert Wade
Anne H. Ehrman	Ed and Susan McShane	RoseAnn Wagner
John and Chris Ellis	Jack Jr. and Susan Moss	Beverly S. Wahl
Mary Sue Ewing	Mr. and Mrs. Jonathan Norman III	Edith Wells
Sherry A. Farson	Patricia C. Ogden	Brad and Beth Williamson
Keltie Ferris	Acton Ostling Jr.	George Wombwell
Roberta Fischer	Helen Palmer-Ball	Susan and David Wood
Margaret Flowers	Frank and Amy Parker	Jesse and Susanne Wright
LaMar and Joan Gaston	Tom and Jeannette Pardue	

### Gifts in Honor or Memory:

In memory of Niels O. Ewing by Dixie M. Baird  
 In memory of daughter Elizabeth Ashley Dozier by Andrew Dozier  
 In memory of wife Nancy Cooper by Andrew Dozier  
 In honor of Silas Edinger by Evie and Charlie Edinger  
 In memory of Spencer Harper Jr. by Carol Sharpe Harper  
 In memory of Bartow Willingham by Emily Willingham

**The Music Program Endowment Fund; The Judith Brown Music and Mission Fund; The Rosemary Schwartzel Music Fund; The Memorial funds of Tinsley Campbell, Katie Castner; Ellie McCandless and Ellington Bartow ("Bart") Willingham; An anonymous gift**

If you are interested in donating to the Concert Series, or to any of the funds listed above, please make checks payable to **Second Presbyterian Church** and mark on the memo line either "Concert Series" or "Donation to [name of fund]". You may place it in the offering plates, or send to the attention of Jim Rittenhouse at the church. You are welcome to give online at [2ndpreslou.org/giving](http://2ndpreslou.org/giving).



Hosted by:  
2019/2020 Season



# MESSIAH

BY G. F. HANDEL

**GEORGE FREDRICK HANDEL: The Messiah  
(Christmas selections)**

Utterly transcendent! An inspiring performance of this seasonal masterpiece in a location that glows with the grace and joy of Christmas. Kent Hatteberg leads the Louisville Orchestra, the Louisville Chamber Choir, and a select group of soloists, including Second Presbyterian's own, Tenor Ricky Case.

**FRIDAY at 7:30PM  
DECEMBER 6, 2019**

Second Presbyterian Church  
3701 Old Brownsboro Rd,  
Louisville, 40207

Kent Hatteberg, conductor  
Louisville Chamber Choir  
Louisville Orchestra

**GENERAL SEATING  
TICKETS AVAILABLE:**

**\$35** in advance

**\$40** at the door

**LOUISVILLEORCHESTRA.ORG +502.584.7777**



A SPECIAL THANKS from the Ministry of Music ...

to our Sanctuary Choir, Austin Handbells, CANTUS Youth Choir, and Children's Choirs - along with our incomparable Paula Roberts on organ - for their steadfast dedication in leading worship. Second Presbyterian is blessed to have so many gifted musicians ... say a prayer for each of them as they prepare for a beautiful season of worship and music!



SUNDAY, FEBRUARY 16, 2020, 3 P.M.

## The Chenaults Organ Duo



*Exclusively performing works written for four hands-four feet-one pipe organ console, duo organists Elizabeth and Raymond Chenault have commissioned, premiered, and recorded over sixty organ duets. For their renowned artistry they have indisputably earned "The World's Premiere Duo-Organ Team" title given by the Atlanta Journal & Constitution.*

*"Virtuosic, non-stop attention ... the Chenaults showed mastery of the various idioms." (The Los Angeles Times)*

A FREWILL OFFERING WILL SUPPORT:



[www.2ndpreslou.org](http://www.2ndpreslou.org)

## Important Upcoming Dates

### December 1

Advent Workshop & Service  
Dinner/Workshop at 5 p.m.  
Service at 6:30 p.m.

### December 11

Weekday School Chapel

### December 17

Children's Ministry Team Meeting

### December 19

Weekday School Kindergarten  
play

### December 29th

One service—No childcare or  
Sunday School

## Advent & Christmas Childcare & Sunday School



Club 45 (4th & 5th grades)  
9:30 a.m.  
The Cave (Room 179)  
**No Sunday School 12/22 & 12/29**

### Childcare

**Childcare not provided  
12/24 & 12/29**

Room 117 Infants - 2 years  
Great Hall 3 years - 3rd grade  
Room 140 2-3 years



### Deep Blue Rotation Sunday School

Age 3 - 3rd Grade  
during 10:50 a.m. worship  
\*dismissed after Passing of the Peace  
**No Sunday School 12/29**  
(Children will remain in service)

## Montreat Conference Center

Authentic Parents Retreat  
February 7-9, 2020

A retreat for becoming  
more connected, relaxed,  
and faithful parents

Parenting workshops on self care, the "good enough"  
parenting philosophy and faith practices at home.

Go to [Montreat.org](http://Montreat.org) for more information.

To make this a family oriented retreat, programming for children will be provided by  
Second Pres. during parenting workshops.

Contact Lorie Williamson at [lwilliamson@2ndpreslou.org](mailto:lwilliamson@2ndpreslou.org) or 502/895-3483 ext. 219

## Bellewood Christmas Wish List

Action Figures  
Remote control cars/trucks  
Hot Wheels tracks  
Skateboards/Scooters  
Bike helmets  
Art supplies/Craft kits  
Radios/CDplayers  
Batteries (AA, AAA, D)  
Wallets  
Axe bodywash/bodyspray  
Bath & Body sets  
Bathroom Rugs  
Watches  
CDs/DVDs  
Journals & Diaries  
Posters  
Twin/full size sheets &  
Comforter sets  
Shower curtains  
Pots & Pans  
Fast food gift cards  
Gas gift cards  
Pokemon cards  
Fitbits  
Air Fresheners  
Coffee Makers  
Throw pillow  
Dish Towels  
Oven mitts  
Comic books  
Cooking utensils  
Serving utensils  
Bath Towels  
Wash Cloths

# youth

## God's Playfulness

Theologian Jurgen Moltmann wrote about how our relationship with God is a relationship that is formed out of God's playfulness, stating God did not create our world and everything in it because God thought it was necessary, God was playing and being creative. That element of play and creativity has been passed down to us so that when we use our playful spirit, we are imitating God's playfulness which then saturates into every aspect of our lives. Moltmann also writes that our playfulness allows us to celebrate life to the fullest; when we play, we are setting aside every other care or worry and are present in that moment. In our playing with one another, we can see glimpses of a future time when God has triumphed over all death and destruction.

The older we get, the harder it becomes to find time for play and recreation. Recreation at any age is said to keep fun and fantasy alive no matter what age someone may be. Our youth are so busy; they have so much homework and other

activities that require so much of their time each day. Open Gym, every Tuesday evening, is a time set aside for them to remember that they have the ability to play and be free, to make new and lasting memories while playing in a supportive and caring environment.

We play made up games, like Razzle Dazzle; then there are games like kickball that everybody knows and loves. Tuesday nights with Todd Lyles and Toby Nutt are an opportunity for recreation and play, where our youth can step away from their homework and other stressful parts of their lives and just come and be themselves. It is a place where they come to have fun and live their lives to the fullest. We do keep score during the games. However, no one really cares which team wins; the important piece we care about is if we are all having fun. And when we are all having fun together during recreational activities and supporting one another, it is how I envision God's kingdom should look.

Peace,  
Jordan



## Upcoming Events

### December 1

Café 917

Advent Workshop/ Dinner 5 p.m.

### December 7

Cabbage Patch Shopping

### December 8

Café 917

Cabbage Patch Wrapping

2PY Christmas Party 7-9 p.m. at Duane residence

### December 12

High School Girl's Bible Study

Fellowship Dinner at 6:30 p.m. at Mojito's

### December 14

Cabbage Patch Delivery

### December 15

Café 917

2PY Christmas Party at 7 p.m.

HS Winter Retreat Final Payment Due

### December 17

Alumni Open Gym

### December 22

No Café 917

### December 29

No Café 917

### January 5

Café 917 resumes

### January 7

Open Gym Resumes

### January 12

Winter Retreat Meeting 12 p.m. in FH A





# formation



**Presbyterian Women**

## **Presbyterian Women of Second Presbyterian Church**

All women are invited to join our Circle of friendship and Horizon's Bible study which meets on the second Tuesday of each month, September - May, at 10:30 a.m. at the church.

We will meet on Tuesday, December 10, for a study of Lesson 4 in *Love Carved in Stone: A Fresh Look at the Ten Commandments* entitled "The Fifth Word: Honor the Life Givers." Immediately following the meeting, please join us for our Holiday Pot-Luck lunch.

Thanks to all who have given generously to the Presbyterian Women's Thanks Offering, which benefits women and children in need, at home and abroad.

Our December mission is the United Crescent Hill Ministries "Christmas Connection." We will be shopping for children in the UCHM area and will donate money for food gift cards to assist families during the holidays. For questions or support, please contact Ruth Fitzwater.

For questions/information about Presbyterian Women, please contact Amy Parker at 897-5076 (home) or [amyparker158@hotmail.com](mailto:amyparker158@hotmail.com).

---

## **Transit**

All young adults are invited to join Transit. Our group gathers at least twice each month for fellowship, study, and service. Join us!

Brunch will take place immediately following the 10:50 a.m. service on December 8. We'll gather in the Narthex and decide where we would like to go.

Our Christmas Party will take place on Wednesday, December 18, at 7:00 p.m. Further festive details will be coming soon. Please bring a side or a beverage to share. Location will be sent in a separate email to group members.

Please email Seminary Intern Teresa Larson ([tal arson91@gmail.com](mailto:tal arson91@gmail.com)) if you would like to be added to our email list.

## **Flowers for Loved Ones**

Poinsettia baskets are being offered to members who wish to honor/remember individuals. The cost is \$30 and the deadline for ordering is Friday, December 13.

You can leave your check and form in the reception area or you can mail them to Second Presbyterian Church, 3701 Old Brownsboro Road, Louisville, 40207, Attn: Ministry Assistant.

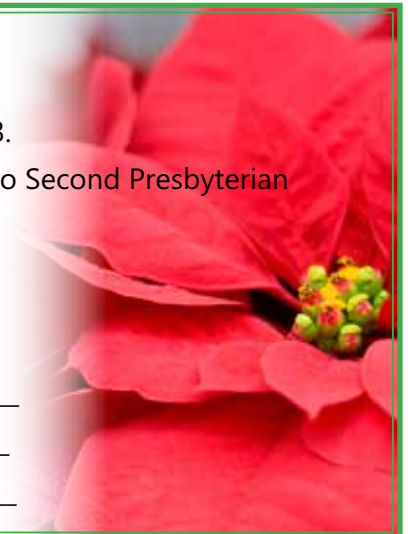
Poinsettia baskets in the Sanctuary can be picked up at the church after the 11 p.m. Christmas Eve service.

Please PRINT all information.

Name of Donor(s) \_\_\_\_\_

In honor of \_\_\_\_\_

In memory of \_\_\_\_\_



# mission

## December Mission of the Month

Make a special gift to our missionaries who are faithfully serving our neighbors throughout the world.

**Sherry & Dustin Ellington**

**Zambia**

**Dan & Elizabeth Turk**

**Madagascar**

**Karla Koll**

**Costa Rica**

Donations can be made to Second Presbyterian Church.  
Designate Missionary Christmas fund on donation.

Thank you for your support,  
Mission Committee

### The Healing Place Hat Ministry Follow-up

On Thursday, November 14, members of Second Presbyterian delivered 300 handmade hats to The Healing Place. These hats were knitted and crocheted over the past three months with each hat taking about 6 hours to complete. The hats were knitted by Busy Needles, additional ladies from the Second Presbyterian congregation, and volunteers from Miralea Masonic Retirement Home. The hats were given out to about 200 men at the conclusion of a group class. The men were able to sort through and choose a hat of their preference. The volunteers were overwhelmed with the thanks, love and appreciation they received from the clients. Additional hats were delivered to the Women's unit of The Healing Place. It is of significance to point out that the men in therapy are not allowed to travel in personal vehicles; therefore, they must walk or take public transit in order to attend mandatory group sessions throughout the city of Louisville. These hats were made to keep the men's heads warm during the cold winter months ahead.

This is a statement of appreciation from the Healing Place:

*"A big thanks to our friends at Second Presbyterian Church for helping our clients stay warm this winter. Ladies from the Busy Needles group knitted hats for clients at our men's campus and delivered them during class. They were a big hit! We are truly grateful for Second Presbyterian and everything they do for The Healing Place."*





## Good News From Our 2018 And 2019 Refugees

The last four months have been busy and successful for our Syrian refugee, Nedal Salaho. He is working, driving, studying, making new friends, and gratefully sharing his experiences with our committee members and volunteers. This bright and personable young man makes clear his appreciation of our support. On October 31, our committee met with him and Maha Kolko, his Kentucky Refugee Ministries (KRM) caseworker and mentor, to mark the official end of our financial support. He is now able to support himself and looks forward to a successful future. We keep in frequent contact with him to make sure he continues to integrate into the Louisville community. Nedal uses bus routes easily but must make four transfers to get to work. He is working toward affording a personal car. We wish him well; he is an asset to our city!

Our Congolese sisters are continuing to become part of Louisville. Genereuse and Immaculee live with their family and are renovating their house in West Louisville. The family has worked hard to update such as adding new appliances for their family of ten. As soon as they can finish the basement and add a bath, the more recently arrived brother, wife, and two little ones will complete the family group in the home.

All adults are working and most are still studying as well. Genereuse has expressed interest in applying to a Rhema Bible College. Older sister Judith has just announced that she will be married on January 4, 2020, in Rwanda. She will travel to Rwanda on December 25 to join her long-time fiancé. This is an exciting time for the family! We will keep you updated on future plans.

Please keep our refugee friends in your prayers. You are making their lives a vital part of Louisville and our country. We wish them all a happy and healthy 2020!

Peace,  
Refugee Committee, Mission Committee



## Outcome of October Mission of the Month

Second Presbyterian collected items for the Food Pantry at PACT throughout the month of October. The church sent 50 bags of needed non-perishable food and household items to the PACT Food Pantry.

Thank you for your support!

-Mission Committee



# weekday school

When we think about people making a positive difference in the world, whether they be cancer researchers, endangered animal protectors, and more, we notice they tend to be lifelong learners. They remain curious about the world, self-motivated to deepen their wells of knowledge and understanding and are inspired to apply what they have learned to create, help or inspire. At a recent staff meeting, our teachers generated a list of qualities they see in people who are lifelong learners, traits they help children develop during their time at Second Presbyterian. They are:

*inquisitive, curious, kind, tolerant, generous, being a team-builder, compassionate, self-aware, passionate, empathetic, problem-solving, thoughtful, self-regulating, perseverant, motivated, actively listening, engaged, sense of wonder, inclusive, collaborative, flexible, intuitive, imaginative, loving, open-minded, having a love for learning, observant, independent, confident, self-initiating, diligent, using a growth mindset, assertive, creative, patient, taking risks, courageous*

These traits happen to be those that help develop healthy relationships, an open approach to life's challenges, success at work, the problem-solving and enjoyment of life! The wonderful news is that we do not have to stress about forming these qualities inside your children because they are already formed. These characteristics seem to be an innate, natural way for children.

We see moments of them in your children every day, such as when Charlie demonstrated determination and perseverance when he reached for a shaker offered to him. He focused all his attention on making his hands take hold of the shaker and bring it closer to himself, exploring with his mouth. Baylor displayed inquisitiveness and problem-solving as he worked to open a tight-lidded box to find out what was inside.

We watched Victoria as she peered into the small mirror on the table and then drew what she saw to create her self-portrait, observant and engaged. Claire and Corbet were so flexible and patient as they independently used a sand timer to take turns on the rope swing in the Blue Room.

LO, Harper & Maggie practiced being assertive and confident team-builders during their Morning Meeting greeting, making eye contact and shaking hands to warmly welcome each other to a new day in Kindergarten. Robinson and Charlie diligently read a new book, applying what they had learned previously while taking a risk with a more difficult text.

Each person has varying degrees of all of these traits, and it is our job as educators to guide, scaffold and support their continual development. We are privileged to be involved in the wonderful process of celebrating and encouraging the use and practice of these qualities in our classrooms. We do this through our purposeful learning experiences and abundant,

open-ended materials. It occurs in the opportunities we offer for children to take ownership of their learning and voice their thinking. Furthermore, our belief in children's capabilities and intelligence also supports and strengthens their natural love of learning. Their identities as learners and innate understanding of what learning is remains intact as we honor all of the natural ways they demonstrate it. We see the positive differences they make at 2nd Pres and know they will someday leave our school empowered to be agents of change in the big world, too.

*by Hayley Abell is the Director of Second Presbyterian Weekday School*



# fellowship

## SPOT

Second Presbyterian Options Together

### A small group ministry of Second Presbyterian Church

SPOT serves to unite people who share a common interest and deepen their faith in Christ through building relationships and reaching out to others.



#### Book Notes

Our December 3 meeting will be coffee and refreshments in the library where we will select our books for 2020.



Our Tuesday, January 7, meeting will be in the church parlor at 10 a.m. Sharon Stern will review *First: Sandra Day O'Connor* by Evan Thomas.

O'Connor was born in Texas and went to Stanford University and Law School, where she excelled. In 1952 she was not recognized for an interview by any law firms. She became involved in state politics and in 1981 was appointed as the first female Supreme Court Justice by President Ronald Reagan. She served for nearly 25 years. This book captures every aspect of her remarkable life.

Join us anytime. We faithfully support UCHM food closet. Jean O'Brien (502) 897-0950 [jeanobrien502@gmail.com](mailto:jeanobrien502@gmail.com)



#### 2nd Act

Gathering will be held December 19 at the Episcopal Church Home on Westport Road, 11 a.m. - noon. For more information, contact Susan Langford (502) 897-3789 [toursplus@aol.com](mailto:toursplus@aol.com)



#### Busy Needles

We meet three times a month, see the church calendar online for dates!

Mary Ayers (502) 429-3415 [marywayers@aol.com](mailto:marywayers@aol.com)  
Bev Wahl (502) 423-9271 [bevwahl41@gmail.com](mailto:bevwahl41@gmail.com)



#### Paint SPOT

We gather on Thursdays at 1 p.m. in the Youth Suite.

Linda Wood (502) 893-3330 [el.wood@twc.com](mailto:el.wood@twc.com)



#### Sisters in Spirit

Sisters in Spirit will meet on December 10 at the home of Susan Snyder, 3718 Edmond Lane. Join us as we discuss Chapter 4 of Liz Curtis Higgs' *Bad Girls of the Bible!*

We meet the 2nd Tuesday of each month, 7-8:30 p.m., reply to [annrfleming@gmail.com](mailto:annrfleming@gmail.com) if you can attend. Bring a snack to share.



#### Pilates

Classes are held Monday nights at 5:30 p.m. in the church Narthex. All you need to bring is your own pilates mat and \$10.

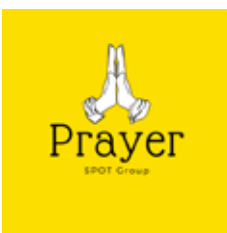
Susan Schmidt (502) 523-5934 [puremovementlv@gmail.com](mailto:puremovementlv@gmail.com)



#### Dinner Groups

Dinner groups continue in December!

Jennifer Scott (502) 326-3145 [jscott@cabbagepatch.org](mailto:jscott@cabbagepatch.org)



#### Prayer Group

Everyone is invited to pray for those on our weekly prayer list on Wednesdays at 10 a.m. in the Parlor.

Beth Haendiges (502) 895-3483 [bethh@2ndpreslou.org](mailto:bethh@2ndpreslou.org)



#### Walkers

The SPOT Walkers meet twice a month. See online calendar for dates!

Sandy Bailey (502) 429-6840 [sdb1205@bellsouth.net](mailto:sdb1205@bellsouth.net)

Second Presbyterian Church

## Trivia Night

<b>WHEN</b>	• Friday, January 24 • 7:00-9:00 p.m.
<b>WHO</b>	• Teams of 8 • \$5 per person
<b>HOW</b>	• Childcare provided • <i>Reservations required</i> • \$5 per child
<b>BRING</b>	• 1 dessert per table to share • Snacks for your own table
<b>PRIZES</b>	• Best Team Costume • Best Centerpiece • Highest Points • Lowest Points
<b>RSVP</b>	• by Monday, January 20 • to Beth at (502) 895-3483 or <a href="mailto:bethh@2ndpreslou.org">bethh@2ndpreslou.org</a>

# welcome new members

## **Samuel Oboamah Asiedo** *(not pictured)*

Samuel is ordained in Ghana and is now studying at Louisville Seminary. He is married with four children: Maud, Emmanuela, Samuel, and Esther.



## **Ashley Brown**

Ashley and David recently had their first child, Caroline, and moved back to Louisville. The family is looking forward to becoming more involved with the community.



## **Kelly Bryant**

Kelly grew up very involved in her church, First Presbyterian Church in Hopkinsville, Ky., but had not joined a congregation since moving to Louisville, with her husband, David. Kelly and David

have a young son, Samuel.



## **Allison Cooper**

Allison Cooper wishes to worship with her mother, who recently joined Second Presbyterian.



## **Thomas Cooper**

Thomas Cooper transferred from Trinity Presbyterian to Second Presbyterian to worship with his mom and sister.



## **Brian & Carolyn Heil**

Brian and his wife, Carolyn, have three children, Victoria, Hurston and Tinsley. Brian was born and raised in Louisville. Carolyn's family was in the military. Their children are young, energetic and inquisitive about faith.



## **Jane Hobson**

Jane came from Mullins Methodist Church in Memphis, Tenn. She has three grown children, including Amy Parker in our congregation. Jane is a retired teacher who taught Sunday School at her last congregation.



## **Scott and Jill Howe**

Scott and Jill Howe joined Second Presbyterian Church with their child, 2-year-old Artemis. Artemis is attending Weekday School. The family moved to Louisville in April and love it here.



## **Amanda Schriber**

Amanda has three children, Simone, Elise and Thomas. She is active in the community, volunteering for arts organizations and for St. Francis of Goshen, where her children go to school.

Her husband works in human resources at Humana while Amanda manages the home. The family has a variety of pets, including chickens.



## **Stephen Stormes and Sue Rogers**

Sue and Steve have been married since 1988. Sue is interested in mission and handbells. Both have transferred from Harvey Browne Presbyterian Church.



## **Nancy Thomas**

Nancy joined after transferring from Calvin Presbyterian Church. She has two sons, Harold and Doug, and one daughter, Ruth. Nancy enjoyed teaching Sunday School, participating in Women's Circles and other ministries at Calvin.



*The Reception of New Members in September.*

## Session Highlights for November 2019

At the November 14, 2019 stated session meeting, the Session:

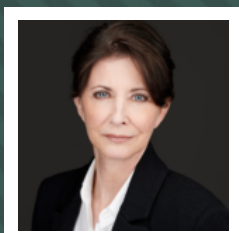
- Approved a new Vision Statement, Mission Statement and Tag Line for Second that will be rolled out in January 2020;
- Received the Clerk's Report, the Minister's Report, the October 2019 Financial Report and various other monthly Committee Reports;
- Approved a motion for Steve and Nathan to meet with church staff to gauge interest and concerns regarding a potential relationship with New Goshen Presbyterian Church;
- Received an update from the Associate Pastor Nominating Committee stating that they are having discussions with the finalists for the Associate Pastor for Youth position;
- Was informed that Sonitrol is actively working to install the new security system in the church;
- Was updated that the chairs of the Personnel, Property and Finance Committees have worked with staff to redistribute responsibilities among support staff. The Business Manager position will be covered by expanding the roles of both the Pastoral Assistant and the Sexton;
- Was informed that Beth Haendiges has accepted the position of Community Life Assistant;
- Approved changing the date to December 1 for the Congregational Meeting to hear and act on a report from the 2019 Church Nominating Committee;
- Approved hosting the Mid-Kentucky Presbytery meeting at Second on Saturday, February 15, 2020;
- Received confirmation from the Property Committee that all church insurance is up to date.

Respectfully submitted, Jennifer Ferguson, Clerk of Session.

(A copy of the approved Minutes of Session is available in the church office.)

## Presbyterian Union

A Monthly Discussion Group sponsored by  
Second Presbyterian & Highland Presbyterian churches



Tuesday, December 3, at 11:30 a.m.

### Dr. Paula P. Grisanti, D.M.D. The National Stem Cell Foundation

The National Stem Cell Foundation funds adult stem cell and regenerative medicine research, connects children with limited resources to clinical trials for rare diseases, and underwrites the National STEM (Science, Technology, Engineering, and Math) Scholar Program for middle school science teachers inspiring the next generation of STEM pioneers nationwide.

**Where:** Vincenzo's, The Courtyard Room  
105 South 5th Street

**Lunch:** Buffet salad and entree, dessert, iced tea

**Cost:** \$16 including gratuity; please pay at the door by cash or check

**RSVP:** Ann or Iuan Schell by 4 p.m. Monday, December 2  
at [adschell@bellsouth.net](mailto:adschell@bellsouth.net) or (502) 894-8440



Periodicals  
Postage Paid at  
Louisville, KY

Second Thoughts (UPS 488-060). Published Monthly.  
Postmaster, send address changes to:  
Second Thoughts, c/o Second Presbyterian Church  
3701 Old Brownsboro Rd  
Louisville, KY 40207

## Staff

**Rev. Steven P. Jester** Pastor/Head of Staff  
jester@2ndpreslou.org

**Rev. Nathan Sautter** Associate Pastor for Community Life  
nsautter@2ndpreslou.org

**Jim Rittenhouse** Director of Music Ministries  
jrittenhouse@2ndpreslou.org

**Lorie Williamson** Director of Children's Ministries  
lwilliamson@2ndpreslou.org

**Jordan Akin** Interim Youth Director  
jakin@2ndpreslou.org

**Hayley Abell** Director of Second Presbyterian Weekday  
School, habell@2ndpreslou.org

**Paula Roberts** Organist  
proberts@2ndpreslou.org

**Jackie Grimley** Bookkeeper  
jgrimley@2ndpreslou.org

**Elizabeth Clay** Parish Associate  
eclay@2ndpreslou.org

**Teresa Larson** Seminary Intern  
intern@2ndpreslou.org

## passages

### We remember in prayer...

Nancy Hubbard on the death of her sister, Janice Anderson Herbert, 11/15.

Ernie Dreher on the death of his brother, Fred Dreher, 11/12.

Joe Grimes on the death of his wife, Jody Grimes, 11/10.

Kristin Leggett on the death of her father, Dr. James Harrold, 11/8.

David Seay on the death of his father, Horace Hansborough "Doc" Seay Jr., 11/4.

Jean Groskreutz and family on the death of Harvey Groskreutz, 10/30.

The family of Gail Slater on her death 10/22.

The Rukavina family on the death of husband and father, Mark, 10/19.

Jim Beard and family on the death of Jim's mother, Patricia Ann Beard, 10/10.